

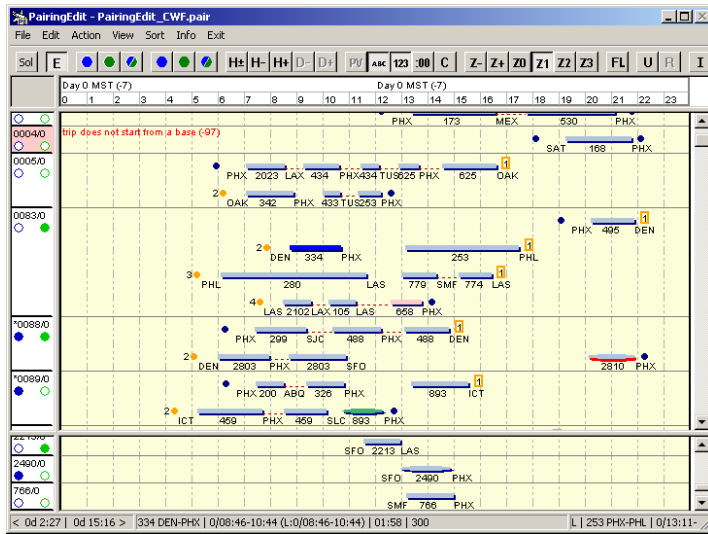


Advanced Optimization Systems, Inc. (AOS)

## Advanced Graphical Pairing Editor (PE)

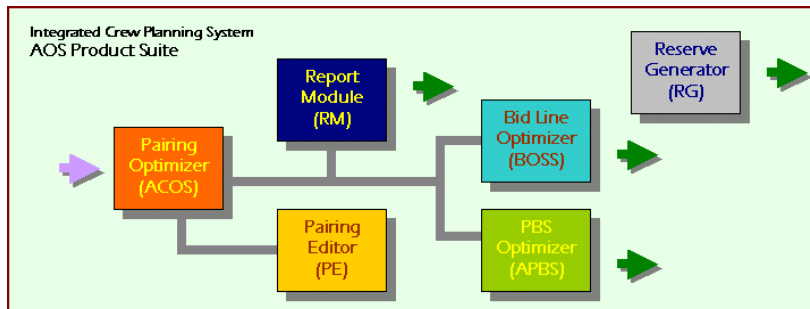
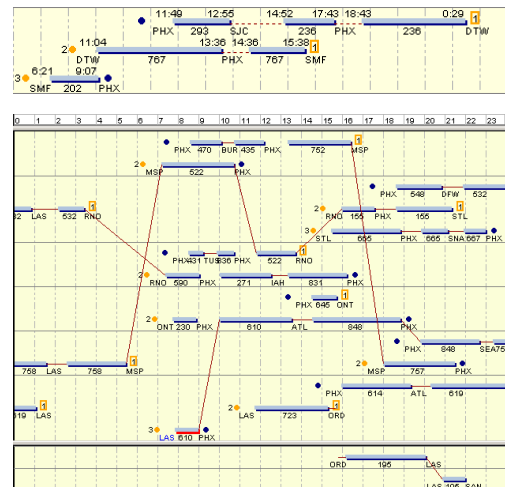
With Automated Pairings Repairing

The Pairing Editor is a graphical tool used for viewing and editing a pairing solution. The colorful and detail oriented point-and-click editor lets users visualize pairings and open time in a calendar for further editing. The editor can also compare the solution against a different schedule and automatically repair pairings due to schedule changes. During editing, the legality of the pairing is immediately determined and if there is a violation, an error message is shown. The Pairing Editor delivers sophisticated functionality with ease of use.



- Present pairings on graphic interface with zoom in and zoom out viewing for daily, weekly, or period (fully-dated) environment.
- Provide advanced pairings/legs searching and sorting capability.
- Drag-and-drop function for pairing construction and revision with real-time legality evaluation.
- Use base domicile time, local time or GMT time as user's options.
- Compare pairings against new schedule and automatically recovers broken pairings.
- Ability to expand daily solution to weekly, and weekly to period (fully-dated) solution.

The Pairing Editor contains features that quickly finds legs for replacement, marks pairings through various criteria so only specific pairings are shown, and sorts the pairings to inspect higher cost pairings. It is a tool that ultimately gives the crew planner a more complete understanding of the pairing problem, which will result in building a better solution. This program is fully integrated with ACOS, Automated Crew Optimization System also developed by AOS.



AOS has developed and implemented crew optimization programs and solutions for airlines since 1992. AOS is the leading provider of automated pairing and line optimization software for major airlines in North America.

Tel: 732.390.8460

Website: <http://www.aos.us>